



PUKEORA ESTATE METRICS REPORT :

Pukeora Estate



PREPARED BY VINEVIEW

FLIGHT DATE FEBRUARY 9, 2020



WHAT'S INSIDE

TRUE COLOR

High resolution aerial image of targeted vineyard blocks. Presented in an enhanced true color format

COLOR INFRARED

High resolution aerial image of targeted vineyard blocks. Presented in a color infrared format

CANOPY GAPS

Measurements of canopy area at 50cm intervals along every vine row.

PUREVINE™

Enhanced Vegetation Index (EVI) layer presented on a vine-by-vine basis. All cover crop and soil data has been removed for canopy-only measurements.

PUREVINE™ ZONES

Zones generated to highlight vigor trends across the field. All soil and cover crop data has been removed from the calculations.

CALIBRATED EVI - LEGACY (ABSOLUTE)

Enhanced Vegetation Index layer highlighting general vigor trends, on an absolute scale

CALIBRATED EVI - LEGACY (RELATIVE)

Enhanced Vegetation Index layer highlighting general vigor trends, on a relative scale

FLIGHT INFORMATION

True Color

Data Product

Pukeora Estate

Client

Pukeora Estate

Ranch

February 9, 2020

Flight Date



FLIGHT INFORMATION

Color Infrared

Data Product

Pukeora Estate

Client

Pukeora Estate

Ranch

February 9, 2020

Flight Date



FLIGHT INFORMATION

Canopy Gaps - Absolute

Data Product

Pukeora Estate

Client

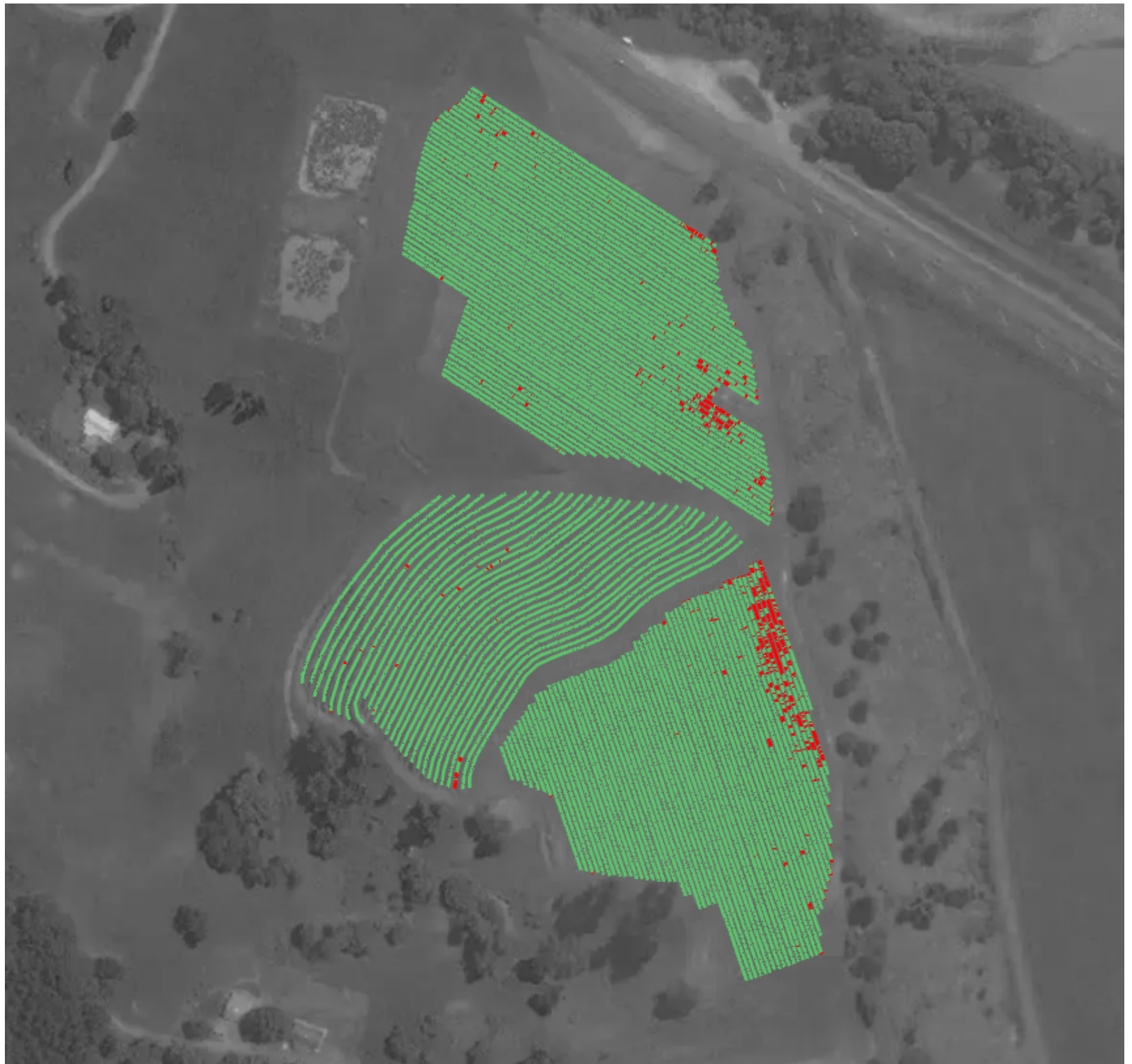
Pukeora Estate

Ranch

February 9, 2020

Flight Date

-
- Present
 - Missing
-



FLIGHT INFORMATION

PureVine™ - Absolute

Data Product

Pukeora Estate

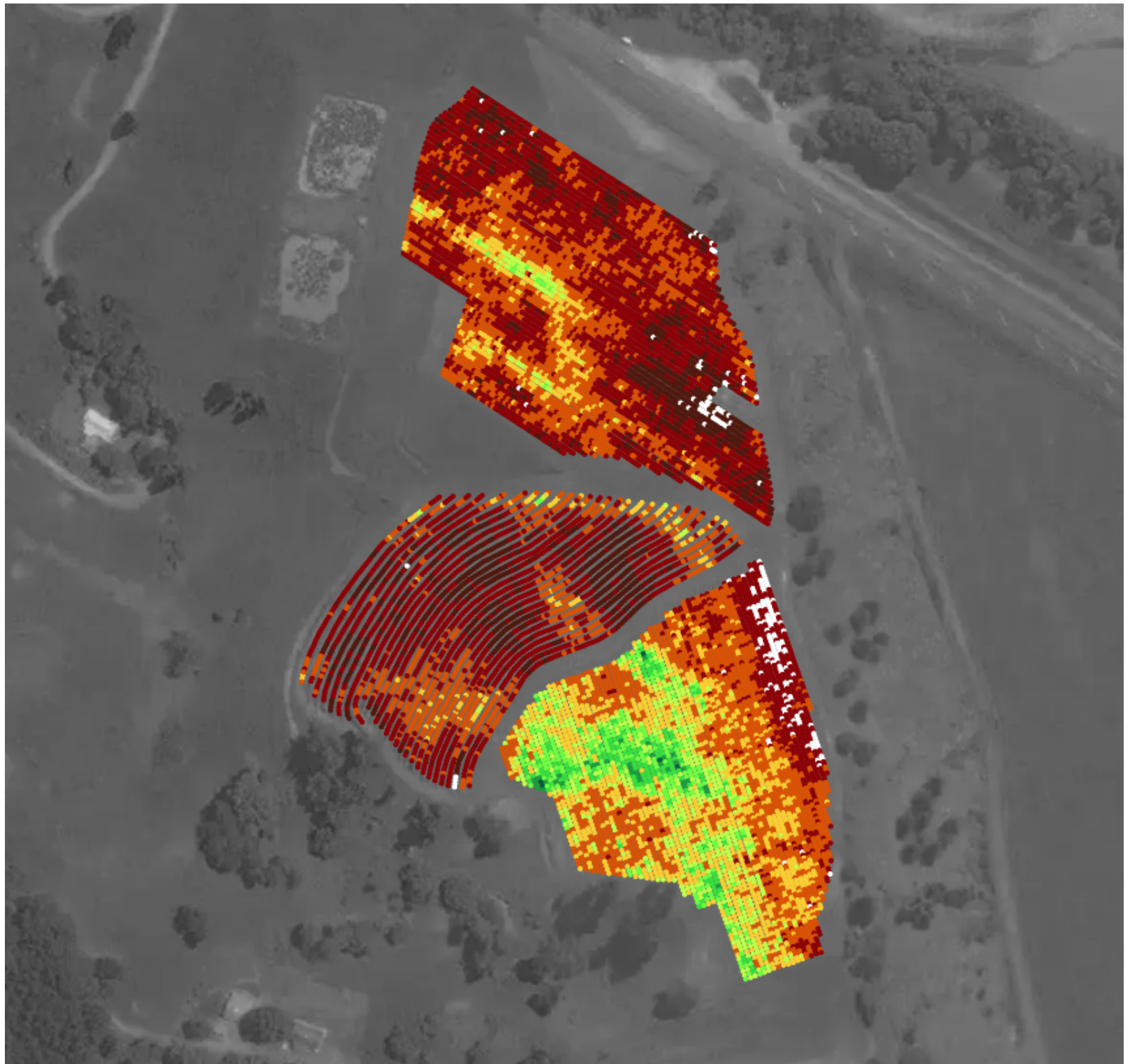
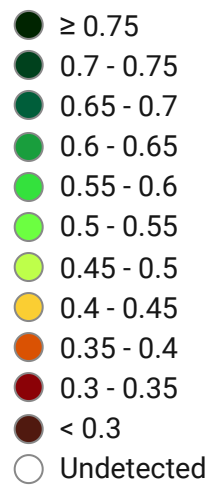
Client

Pukeora Estate

Ranch

February 9, 2020

Flight Date



FLIGHT INFORMATION

PureVine™ - Relative

Data Product

Pukeora Estate

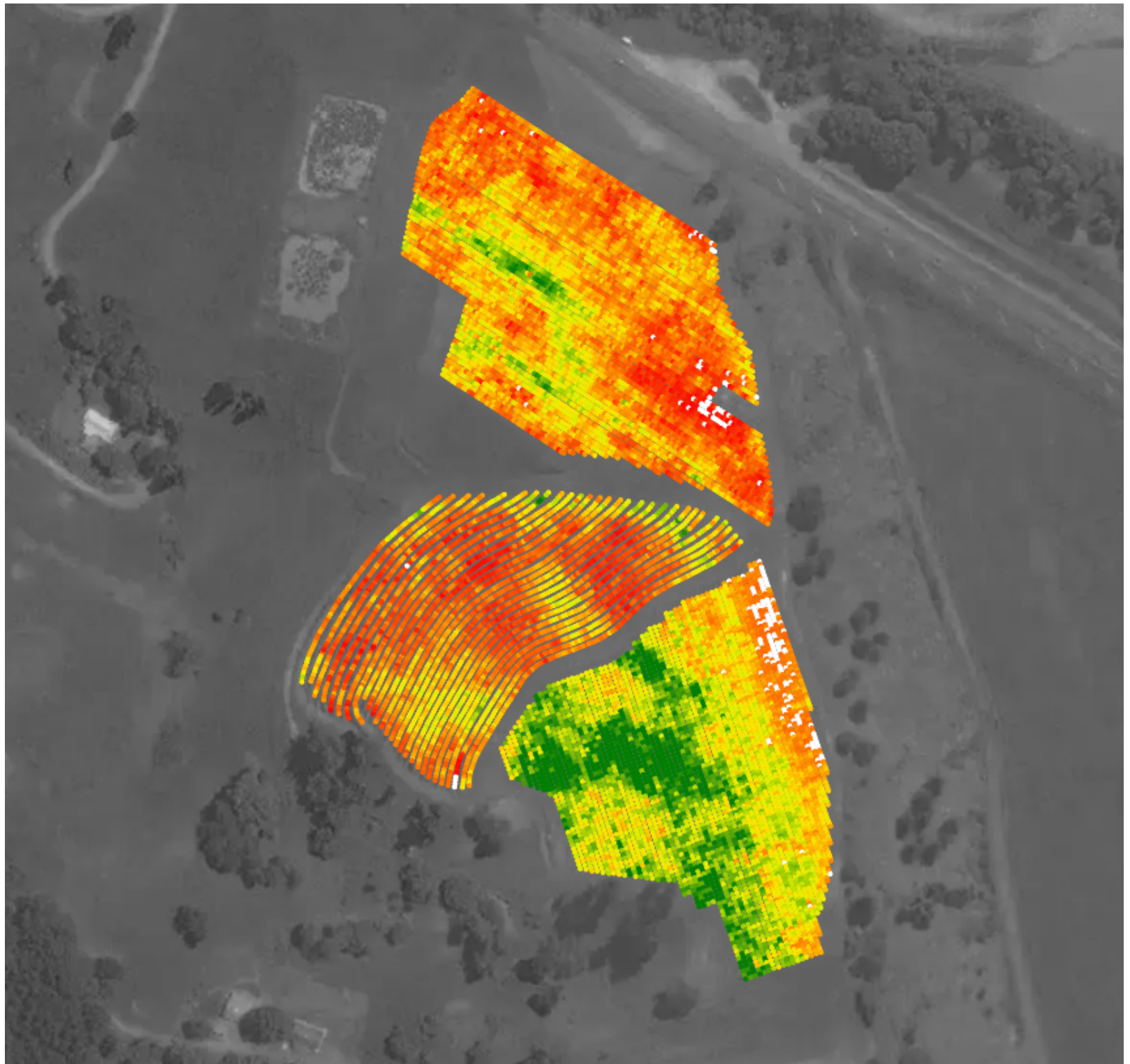
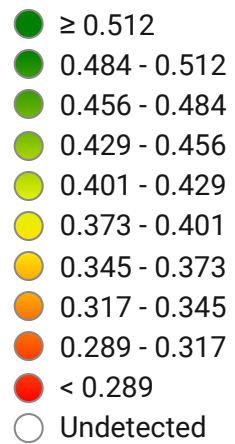
Client

Pukeora Estate

Ranch

February 9, 2020

Flight Date



FLIGHT INFORMATION

PureVine™ Zones - Absolute

Data Product

Pukeora Estate

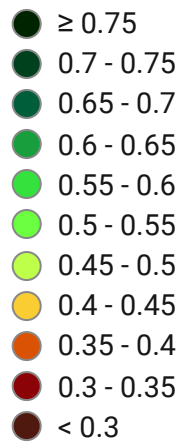
Client

Pukeora Estate

Ranch

February 9, 2020

Flight Date



FLIGHT INFORMATION

PureVine™ Zones - Relative

Data Product

Pukeora Estate

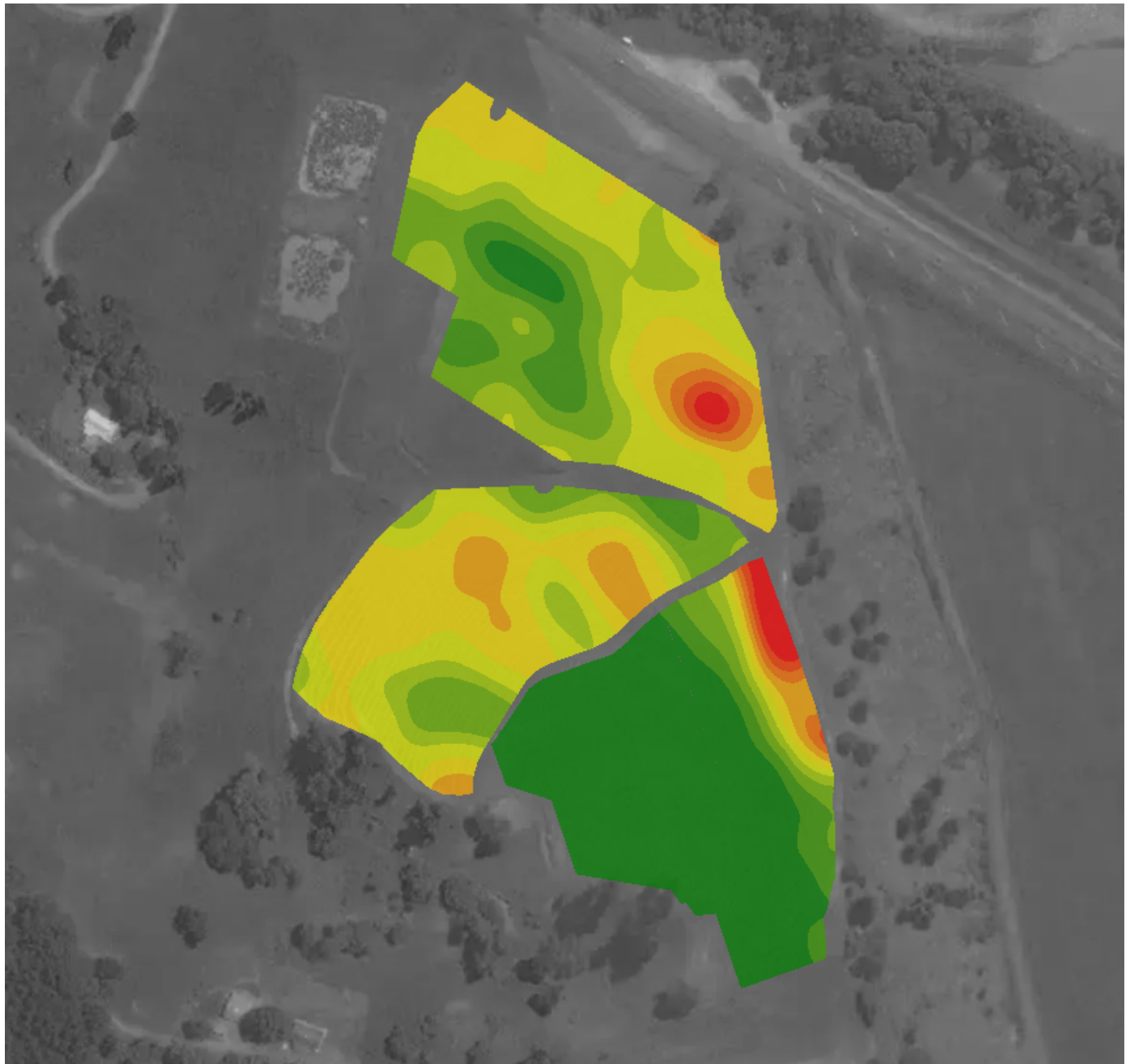
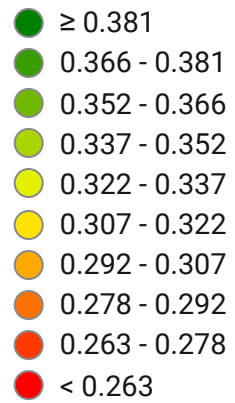
Client

Pukeora Estate

Ranch

February 9, 2020

Flight Date



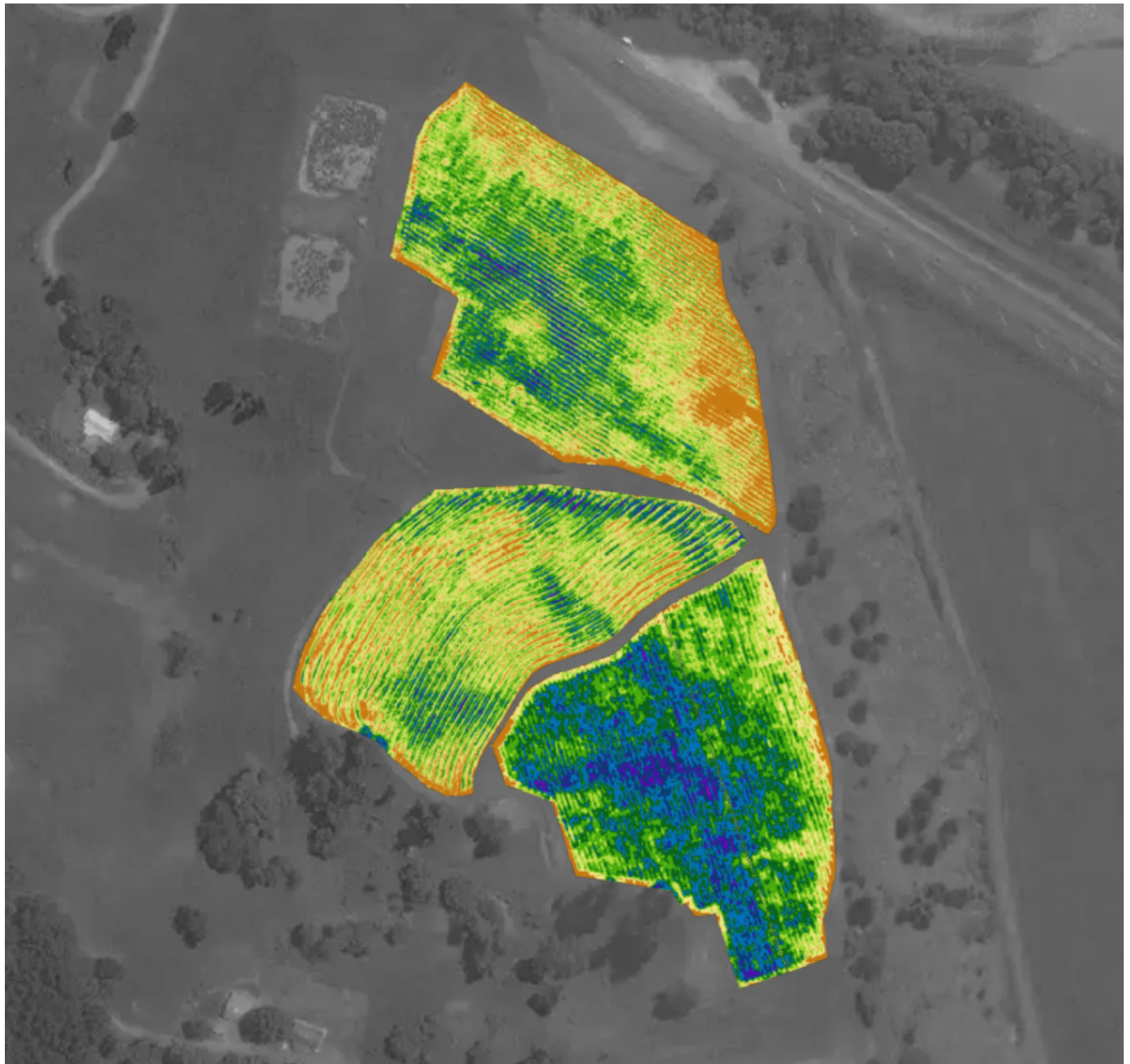
FLIGHT INFORMATION

Calibrated EVI - Legacy
(Absolute) - Absolute
Data Product

Pukeora Estate
Client

Pukeora Estate
Ranch

February 9, 2020
Flight Date



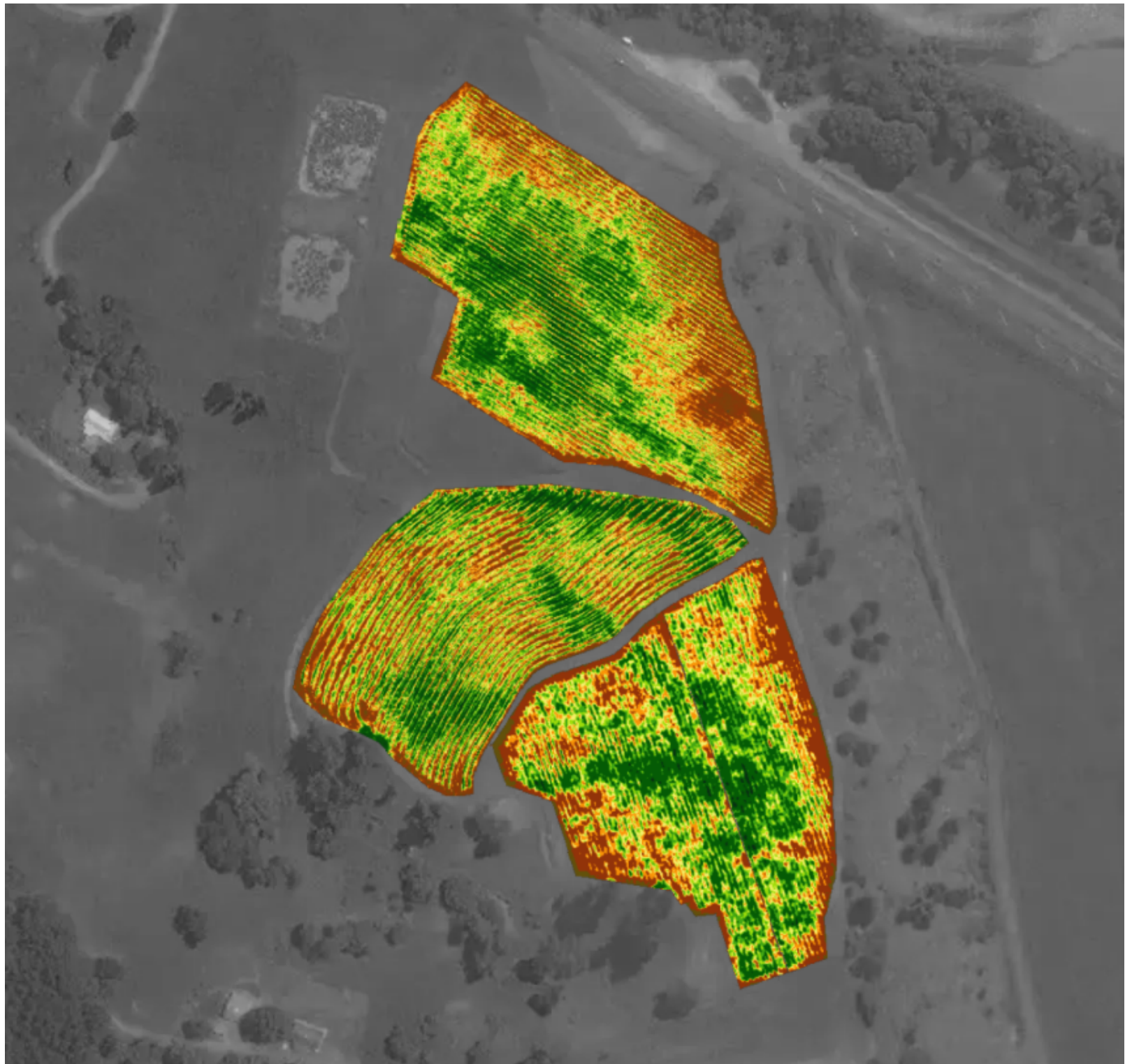
FLIGHT INFORMATION

Calibrated EVI - Legacy
(Relative) - Relative
Data Product

Pukeora Estate
Client

Pukeora Estate
Ranch

February 9, 2020
Flight Date



**BLOCK BLOCK 1
INFORMATION**

1.12 ha

Block Area

2,112 (100 %)

Detected Vines

0 (0 %)

Undetected Vines

0.0 ha

Area Not In Use

40

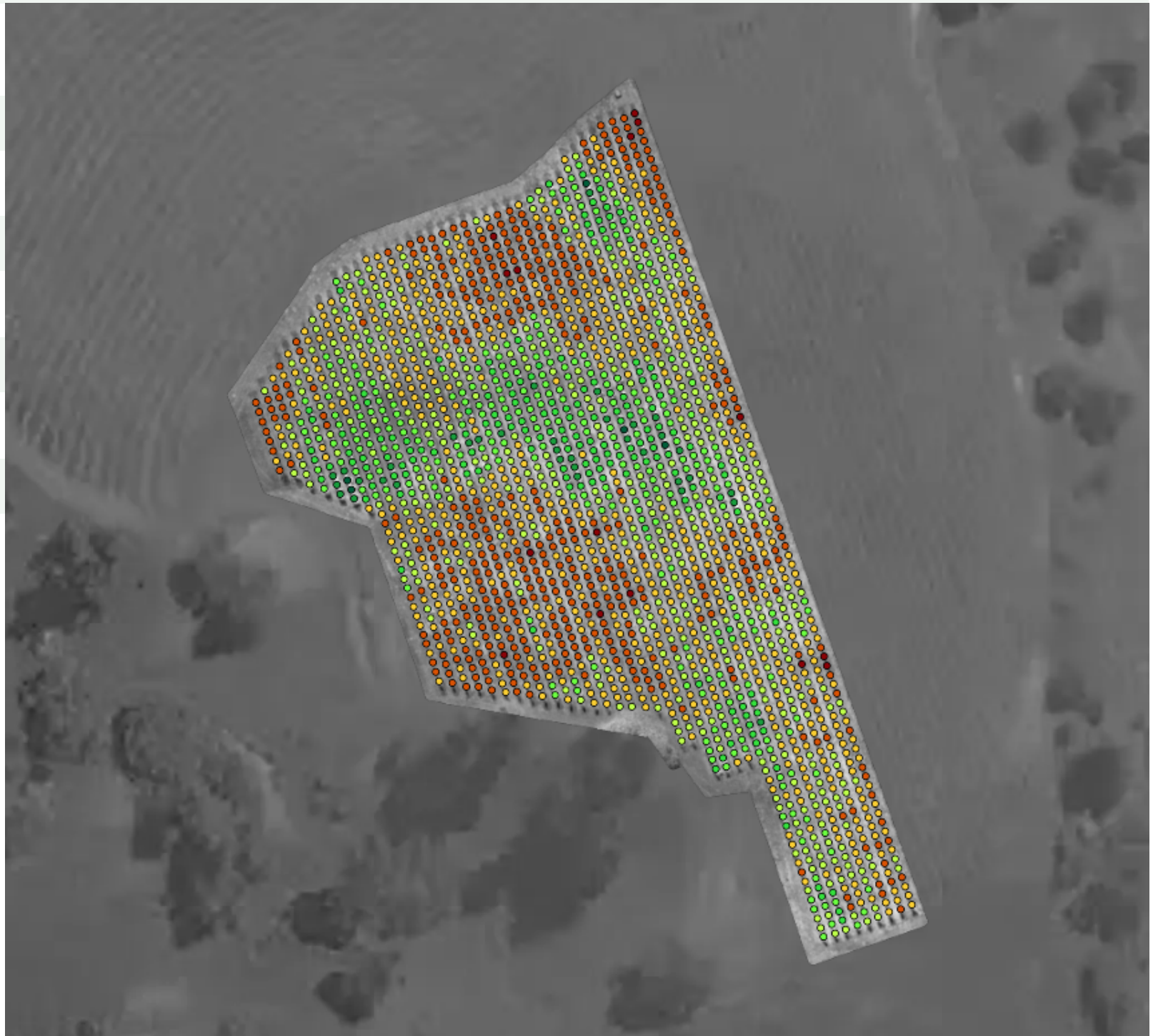
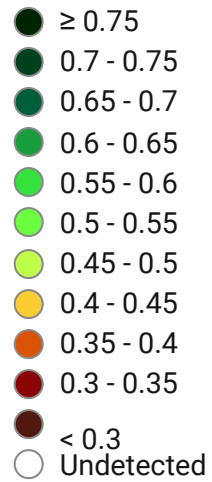
Rows

0.45

Mean EVI

0.06

Standard Deviation



**BLOCK BLOCK 1
INFORMATION**

1.12 ha

Block Area

2,112 (100 %)

Detected Vines

0 (0 %)

Undetected Vines

0.0 ha

Area Not In Use

40

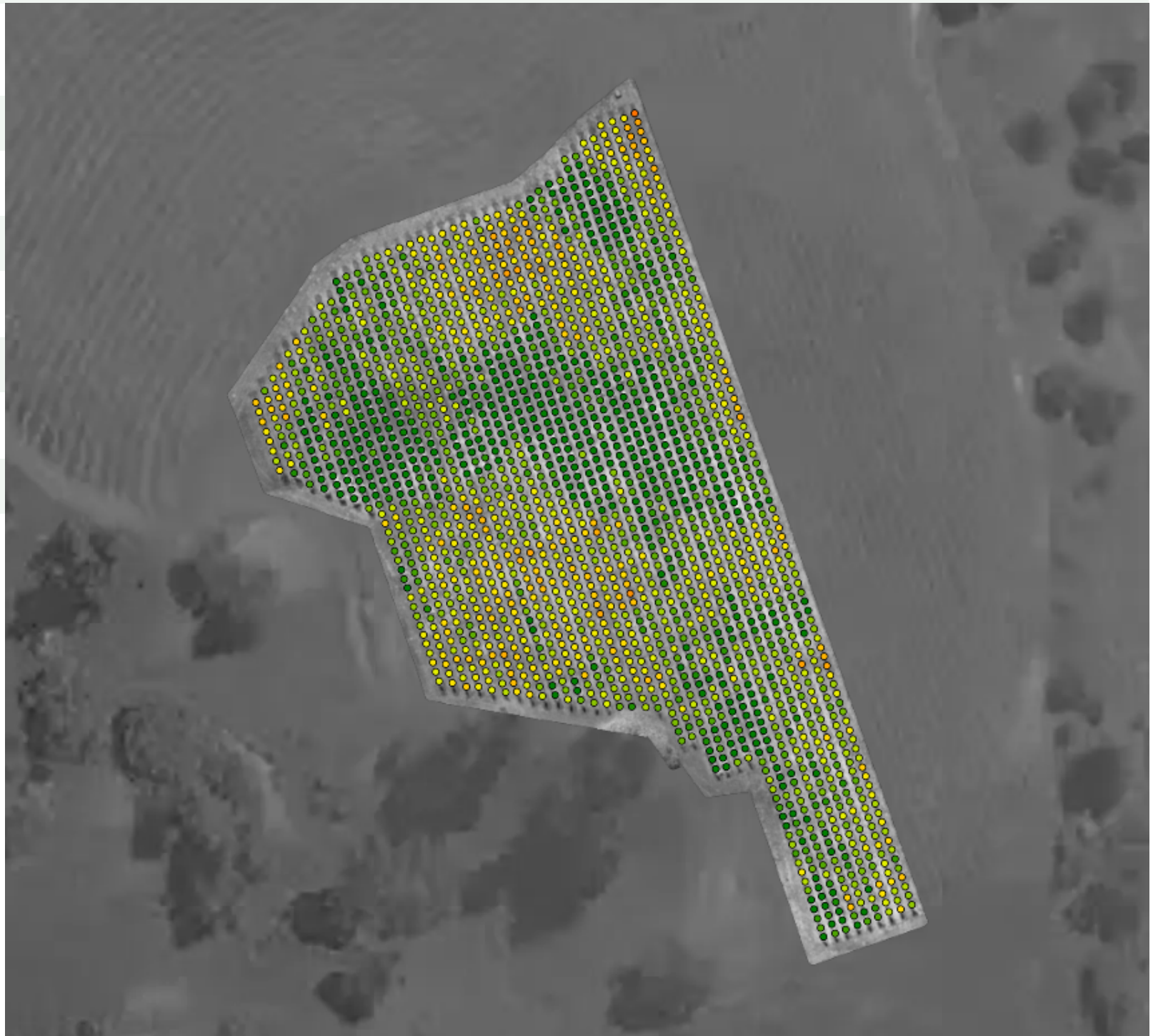
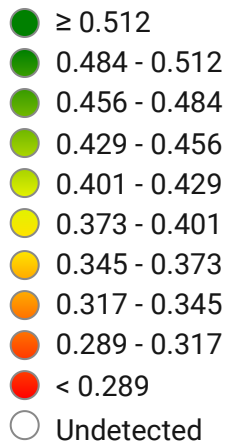
Rows

0.45

Mean EVI

0.06

Standard Deviation



**BLOCK BLOCK 1
INFORMATION**

0.87 ha

Block Area

2,264 (94.5 %)

Detected Vines

133 (5.5 %)

Undetected Vines

0.05 ha

Area Not In Use

22

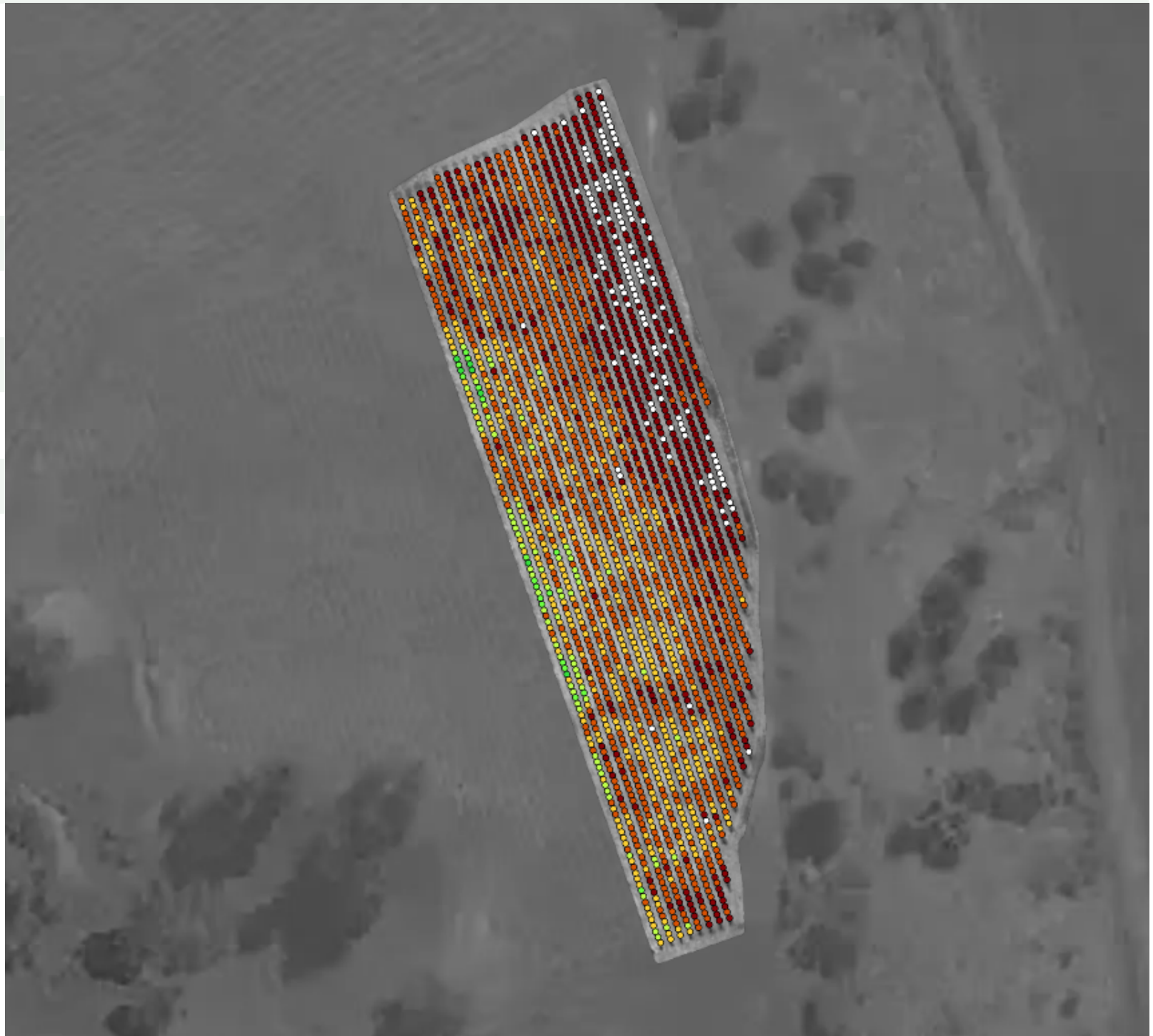
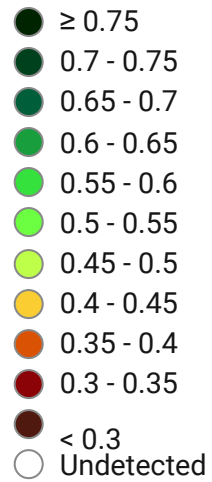
Rows

0.38

Mean EVI

0.04

Standard Deviation



**BLOCK BLOCK 1
INFORMATION**

0.87 ha

Block Area

2,264 (94.5 %)

Detected Vines

133 (5.5 %)

Undetected Vines

0.05 ha

Area Not In Use

22

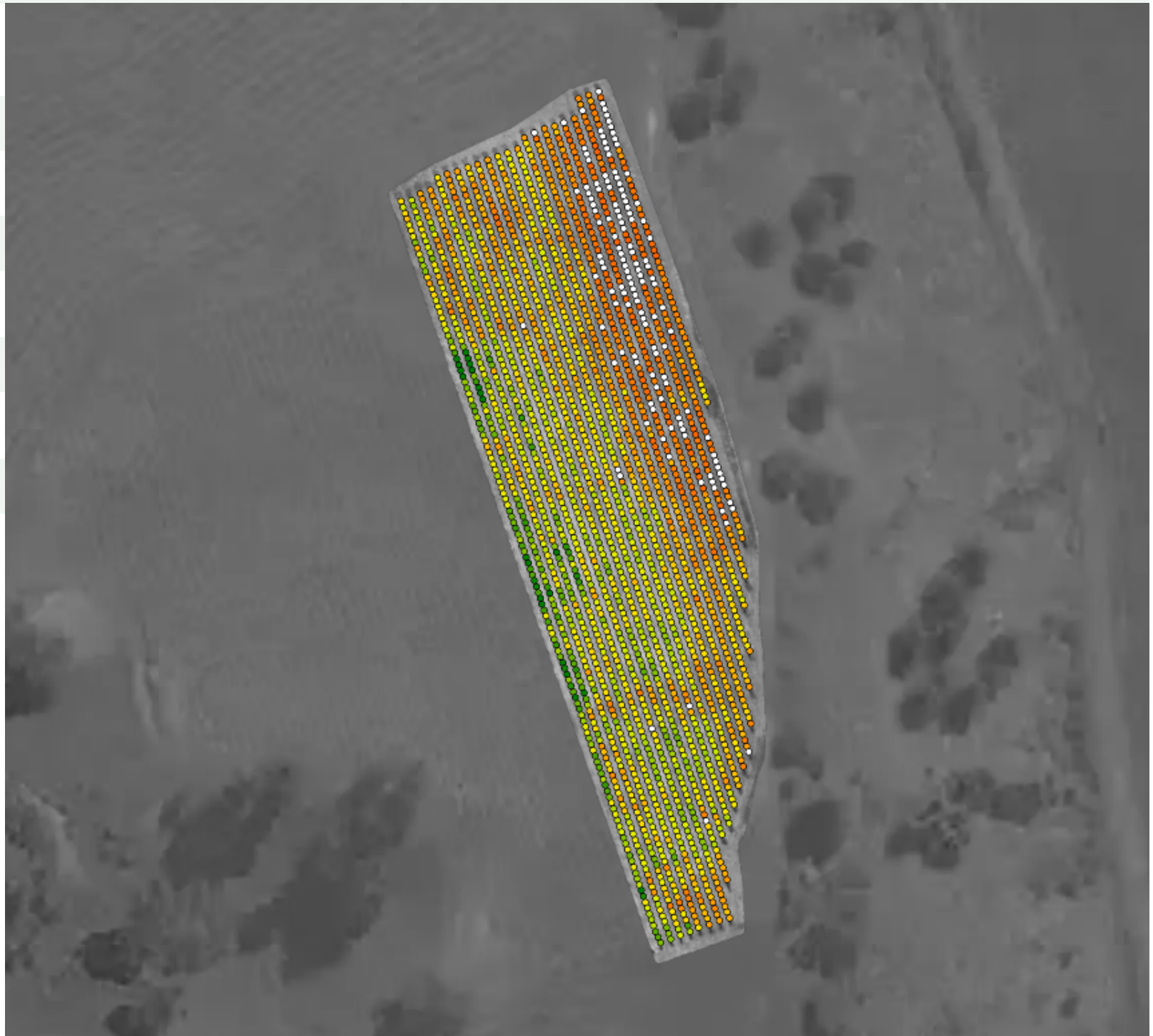
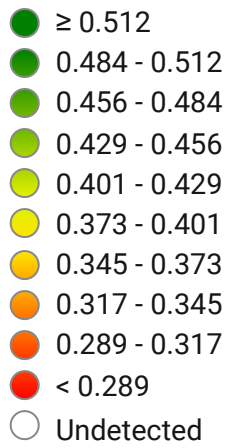
Rows

0.38

Mean EVI

0.04

Standard Deviation



**BLOCK BLOCK 2
INFORMATION**

1.72 ha

Block Area

2,813 (99.8 %)

Detected Vines

5 (0.2 %)

Undetected Vines

0.0 ha

Area Not In Use

28

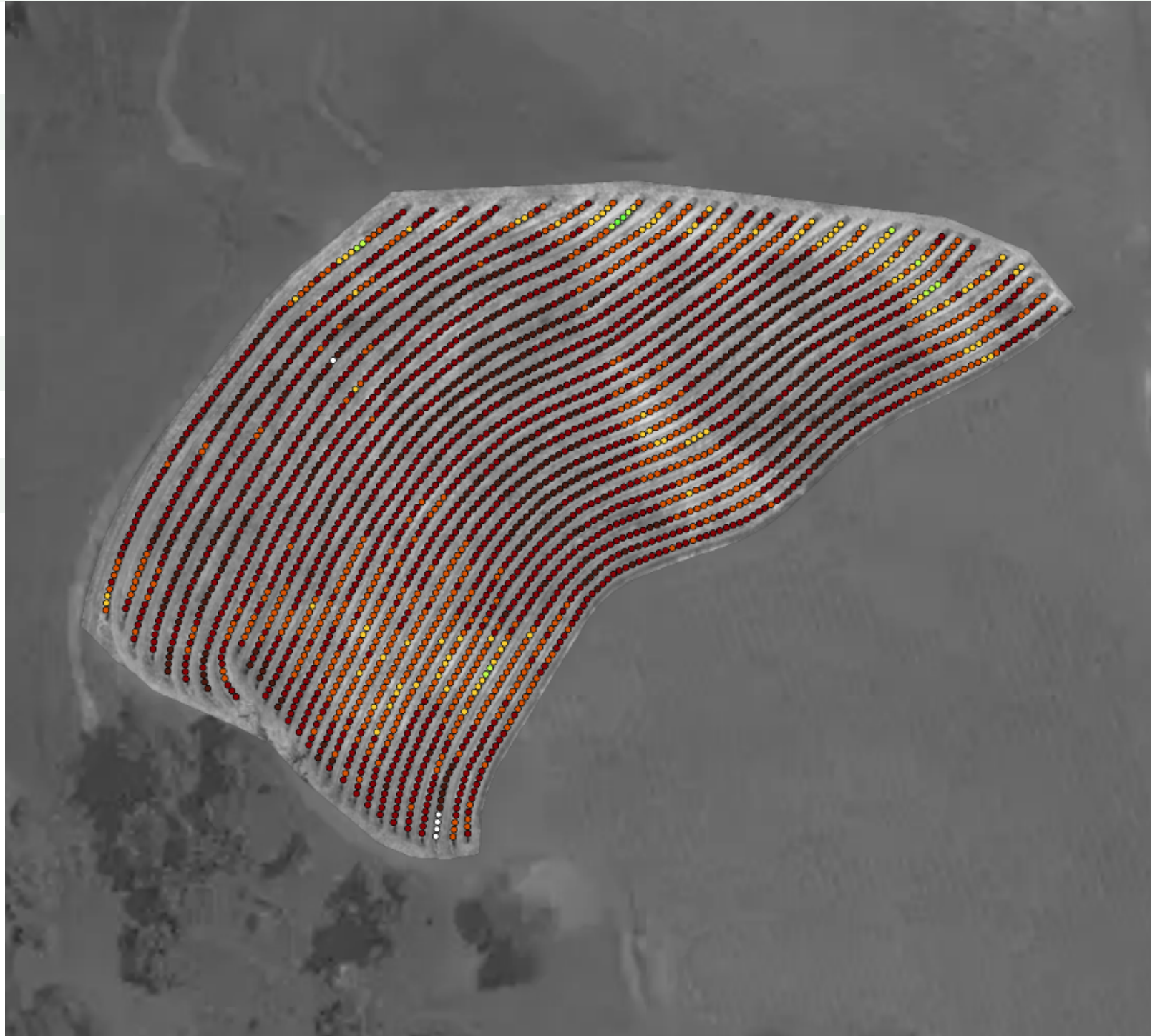
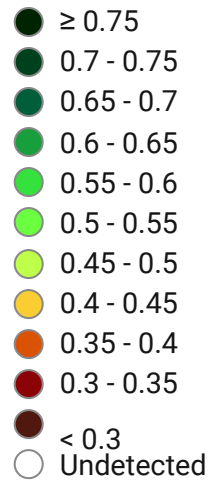
Rows

0.33

Mean EVI

0.04

Standard Deviation



**BLOCK BLOCK 2
INFORMATION**

1.72 ha

Block Area

2,813 (99.8 %)

Detected Vines

5 (0.2 %)

Undetected Vines

0.0 ha

Area Not In Use

28

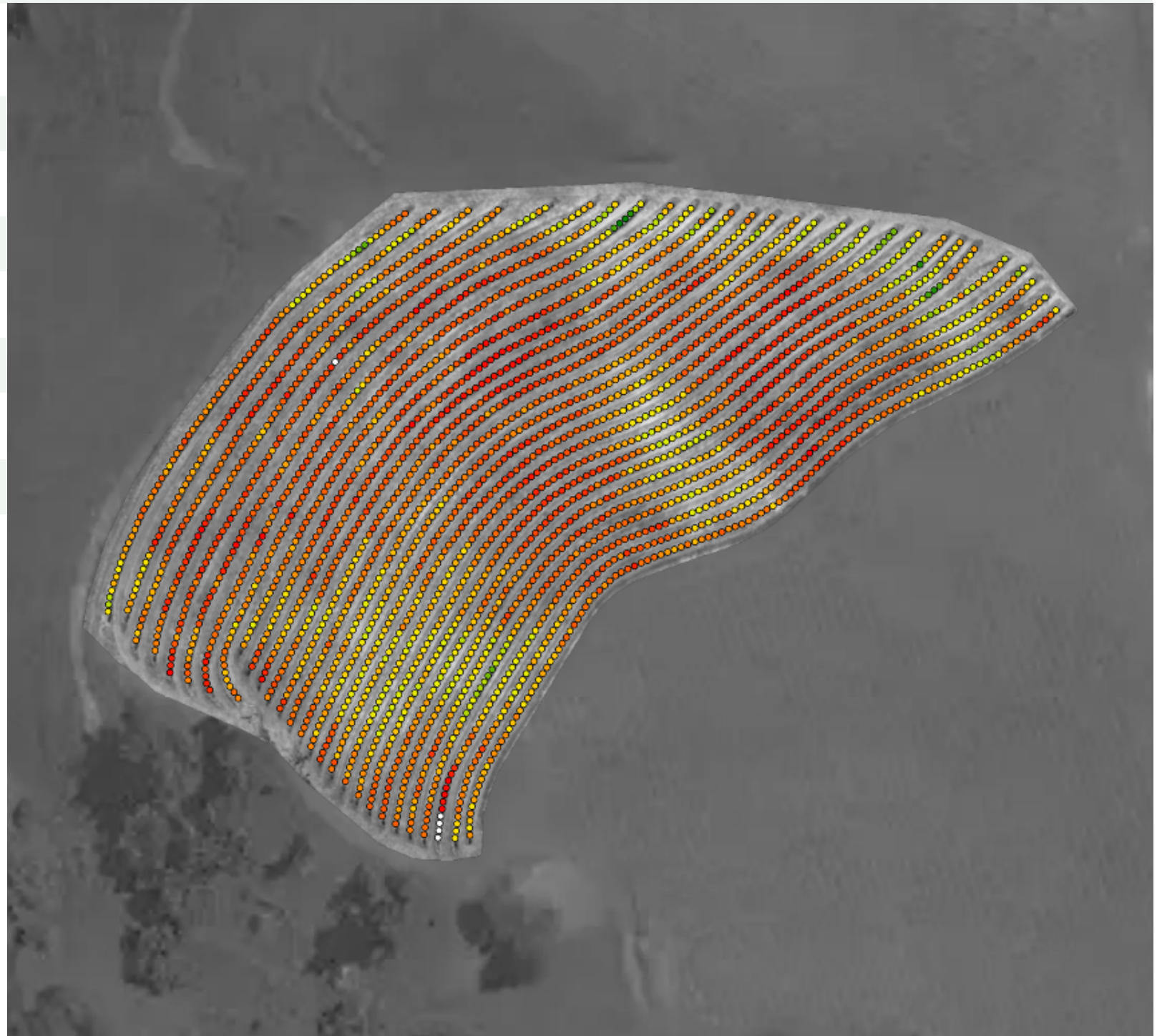
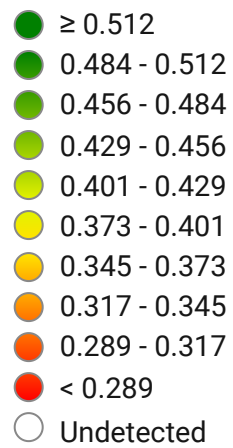
Rows

0.33

Mean EVI

0.04

Standard Deviation



BLOCK BLOCK 3 INFORMATION

2.23 ha

Block Area

5,603 (99.1 %)

Detected Vines

50 (0.9 %)

Undetected Vines

0.02 ha

Area Not In Use

52

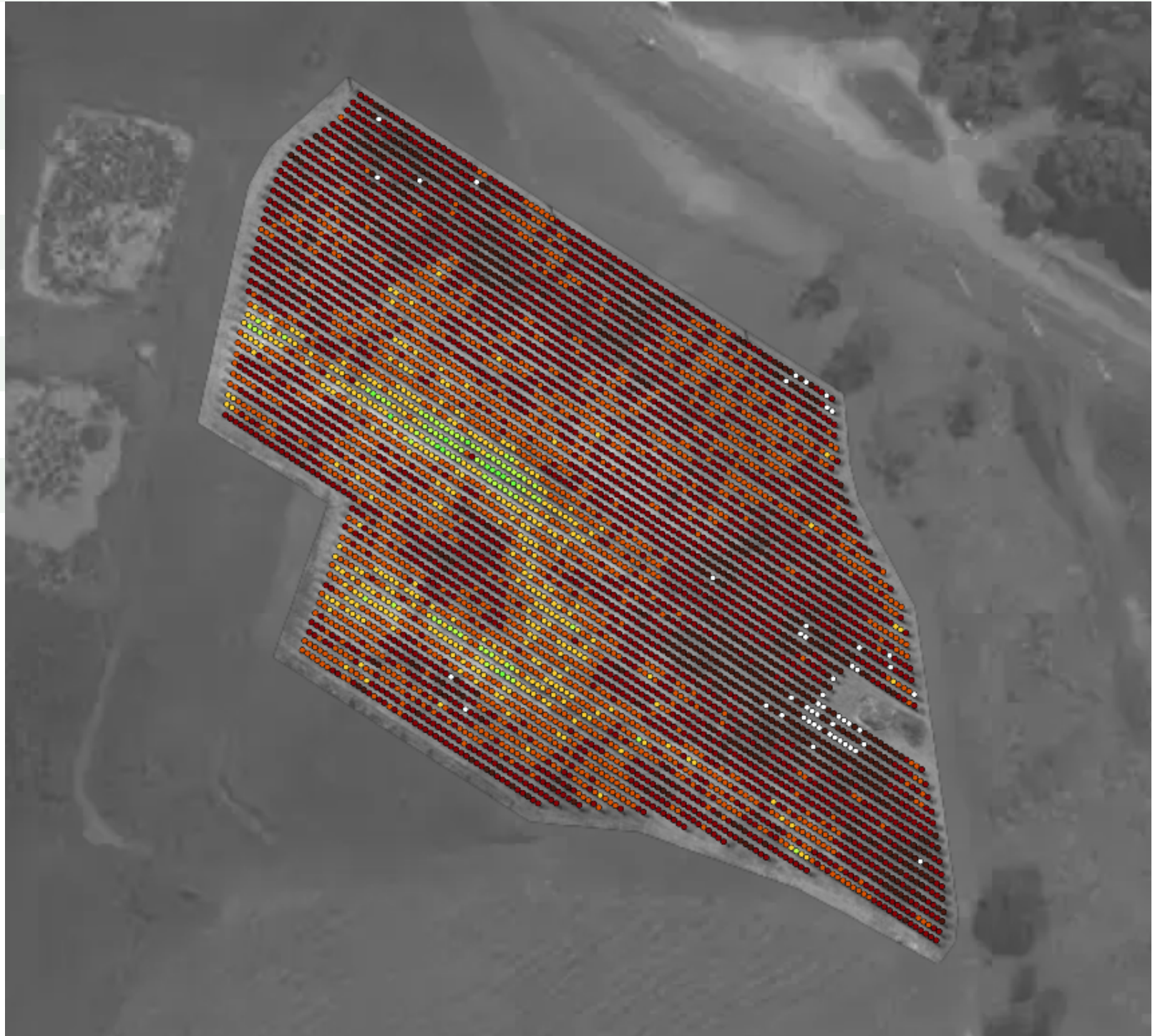
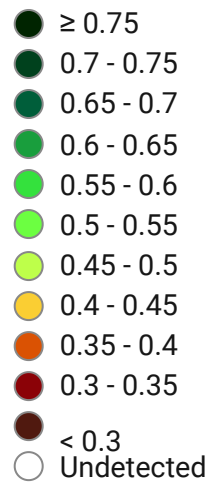
Rows

0.34

Mean EVI

0.04

Standard Deviation



**BLOCK BLOCK 3
INFORMATION**

2.23 ha

Block Area

5,603 (99.1 %)

Detected Vines

50 (0.9 %)

Undetected Vines

0.02 ha

Area Not In Use

52

Rows

0.34

Mean EVI

0.04

Standard Deviation

