



THE SURVEYING COMPANY

ADVANCEMENTS IN MULTISPECTRAL ANALYSIS





THE SURVEYING COMPANY

ABOUT THE SURVEYING COMPANY



- At The Surveying Company we specialise in delivering UAV based solutions to meet our customers' requirements.
- We are a CAA Part 102 certified company with a fully assessed and approved H&S system and competent pilots.
- We have over 6 years' experience in the UAV industry with expertise in applications including mining, construction, subdivision and environmental monitoring.
- A.I. technology by Aerobotics (SA) enables us to provide crop insights over and above standard aerial outputs.
- We also provide high accuracy aerial survey and traditional surveying services.



Aerobotics

ADVANTAGES

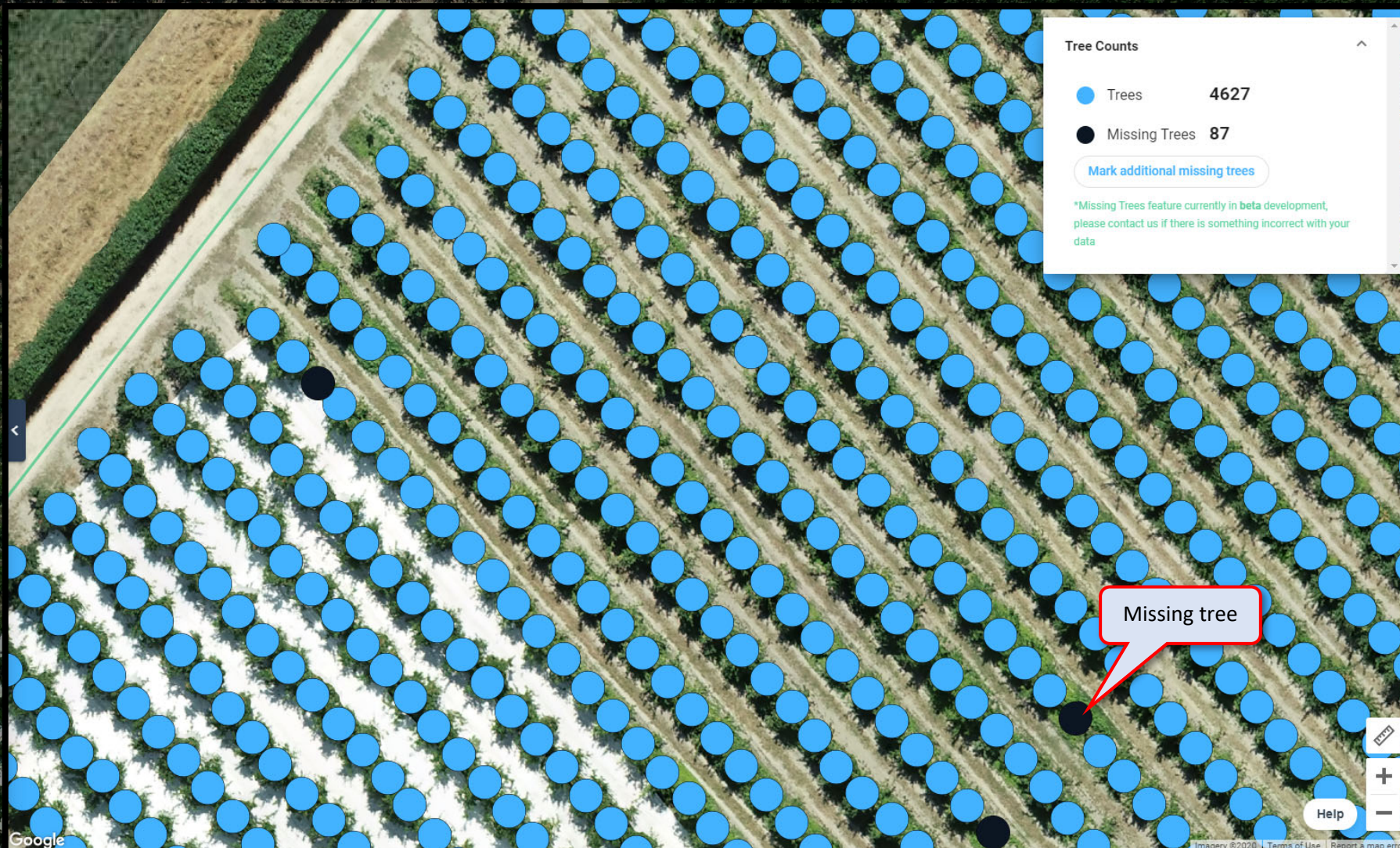


Using Aerobotics advanced analytics and algorithms combined with quality aerial data we can help optimise crop performance for orchardists. Early warning and detection of stressed or diseased trees combined with ongoing monitoring is crucial for optimizing yields.

Aerobotics provides accurate statistics on both the overall site, as well as down the individual tree level.

The data is presented in an easy to use and understandable format for use through mobile and web applications.

TREE COUNTS



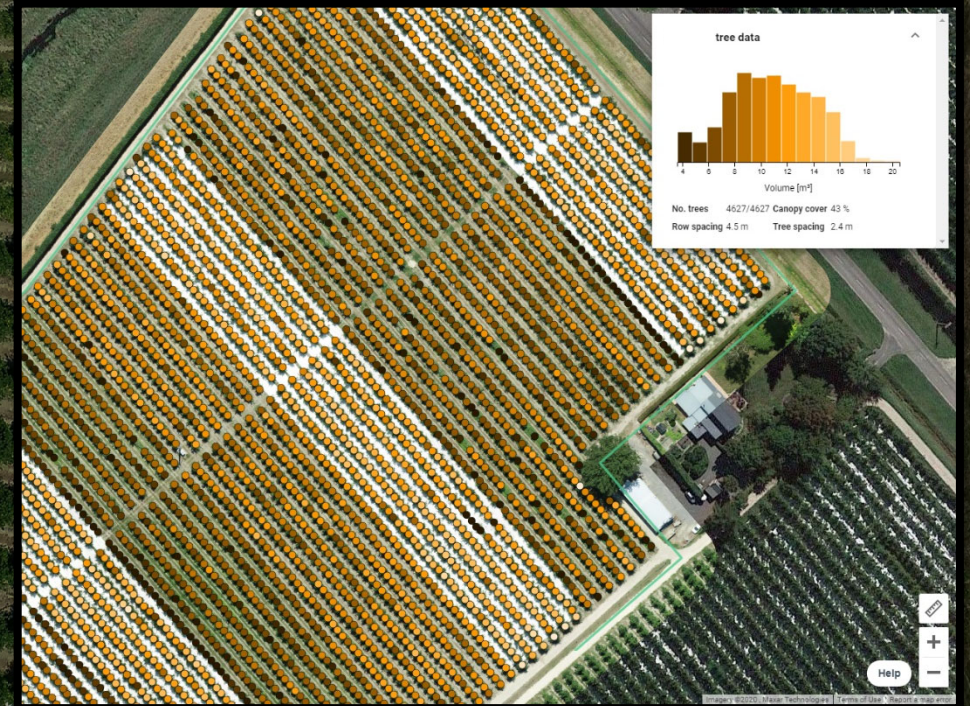
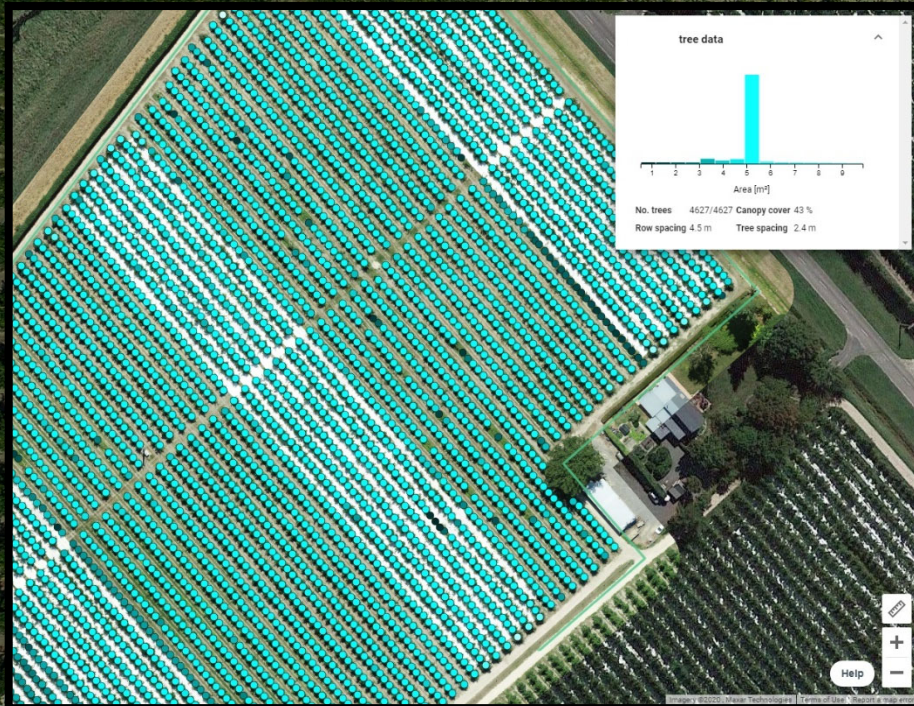
Count all trees in a block and identify gaps to maximise land usage.

TREE HEALTH



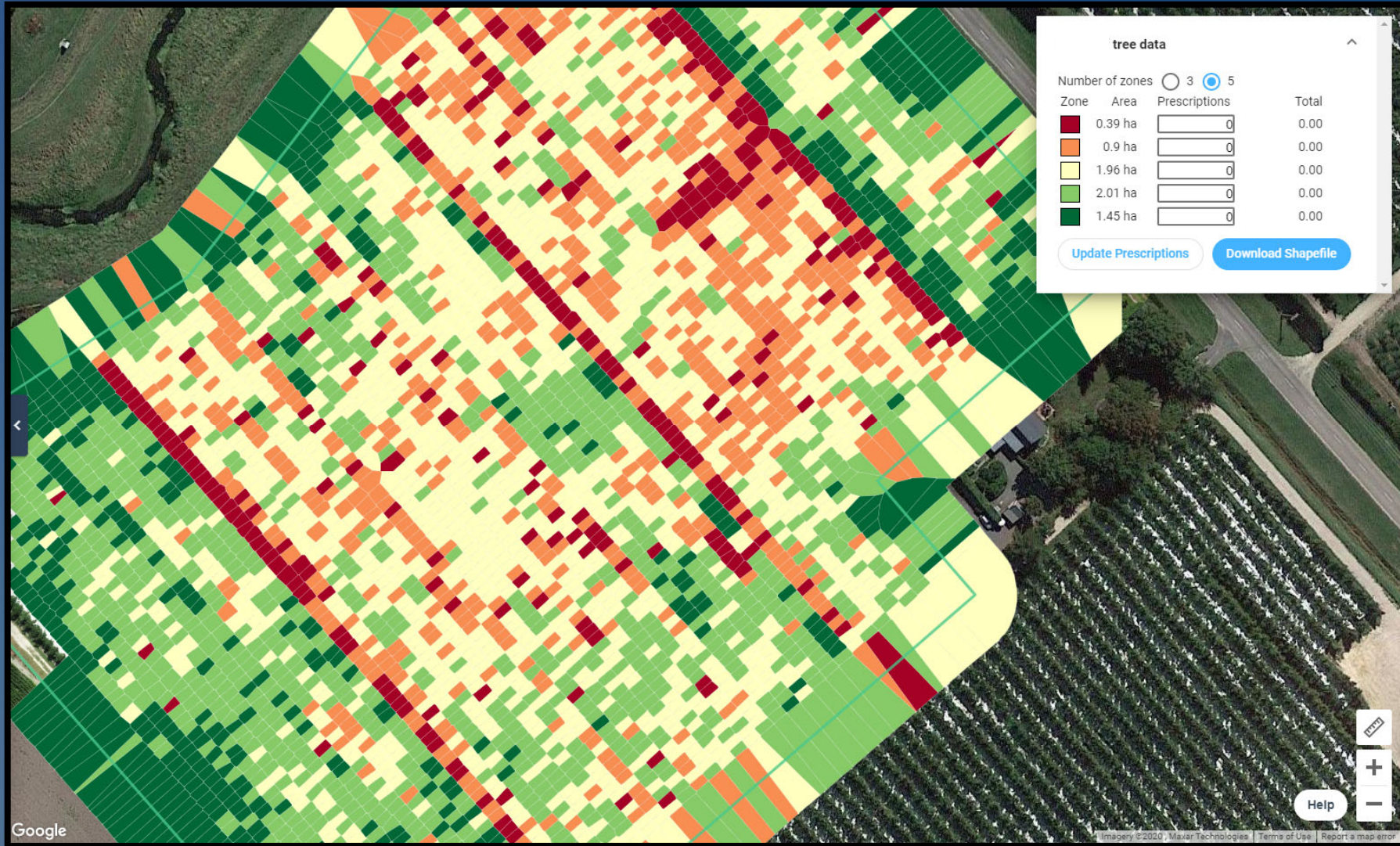
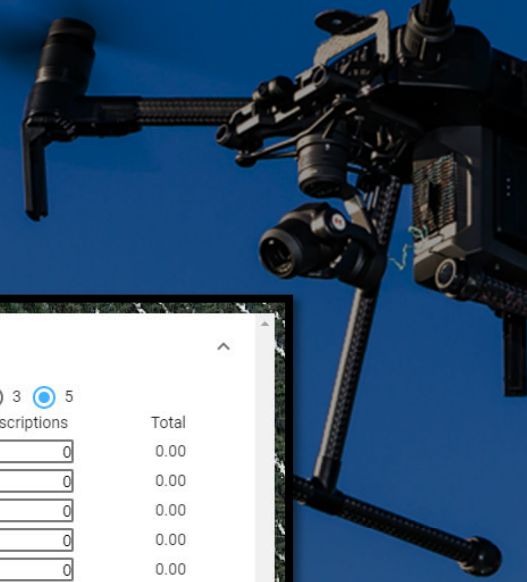
See individual tree health and take action on problem trees.
Use the mobile app to find and record specific trees in the field.

TREE SIZE AND VOLUME



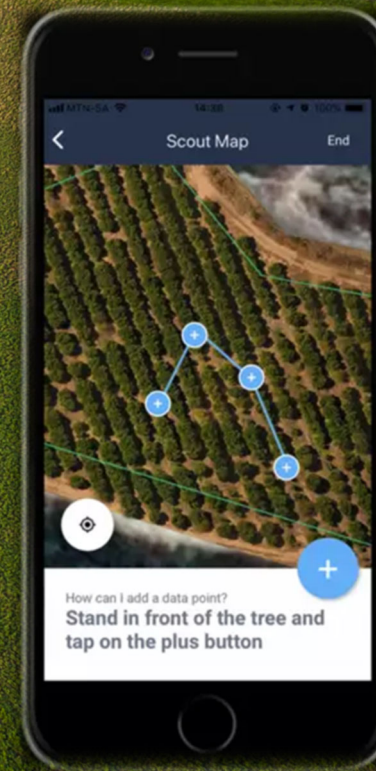
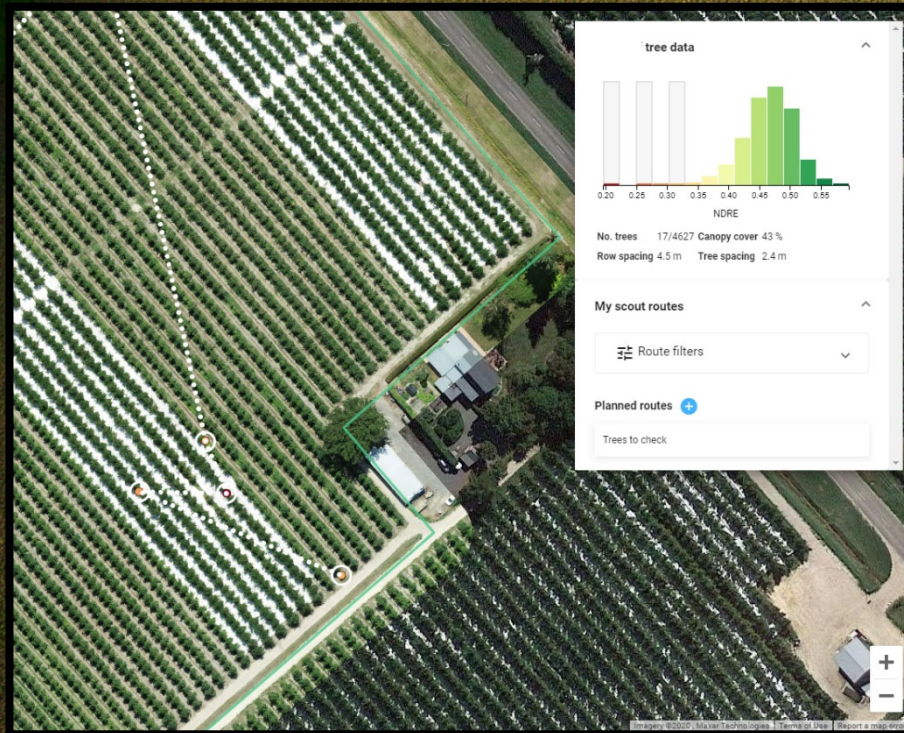
Measure tree size and volume to estimate yield potential

ORCHARD HEALTH MAP



Segment orchards into zones for overall crop health insights.

PLAN SCOUTING ROUTES



Isolate identified trees to plan a scout route. Use the field app to navigate to identified trees, inspect, record and generate action reports.



THE SURVEYING COMPANY

www.surveying.net.nz

06 878 6349 / 027 622 9868

will@surveying.net.nz

